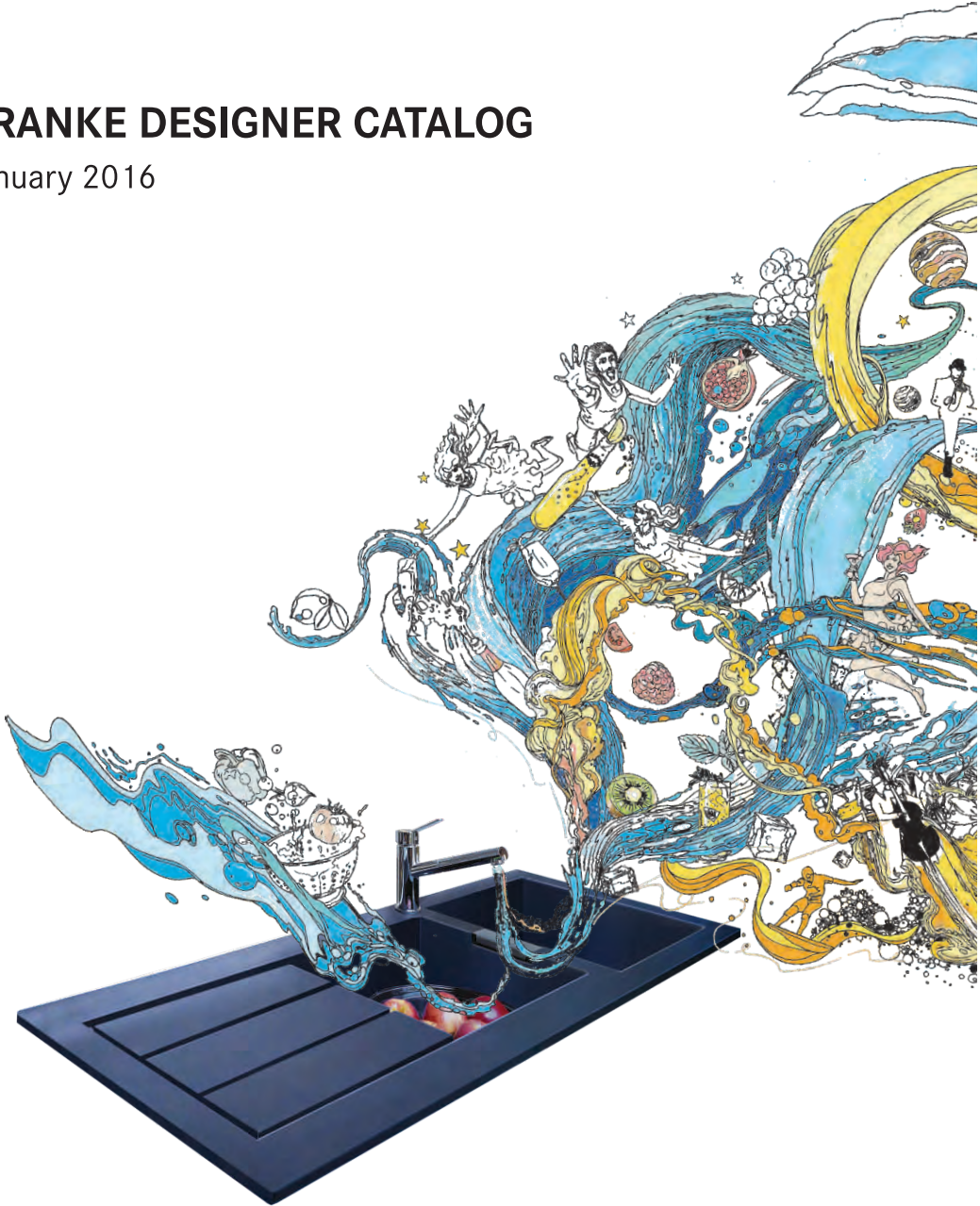


FRANKE DESIGNER CATALOG

January 2016



MAKE IT WONDERFUL

FRANKE

ABOUT US



Franke Headquarters in Aarburg, Switzerland



MAKE IT WONDERFUL

Since 1911, Franke has been known for its dedication to research, development, manufacture and service. Today, it is one of the world's leading suppliers of kitchen sinks, taps, hobs and extractor hoods.

GLOBAL FOOTPRINT

Make it Wonderful



The Franke Group belongs to the Artemis Group, which also develops, owns and manages an extensive real estate portfolio in Switzerland and abroad (Artemis Real Estate Group) and holds various strategic participations in international companies listed on the Swiss stock exchange (Artemis Asset Management Group). The Artemis Group employs around 10,500 people worldwide and generated consolidated sales of CHF 2.13 billion in 2014



Franke Artemis Group Core Businesses

Global Position

FRANKE KITCHEN SYSTEMS		No. 1
FRANKE FOOD SERVICE SYSTEMS		No. 1
FRANKE COFFEE SYSTEMS		No. 2
FRANKE WATER SYSTEMS		No. 3
FRANKE BEVERAGE SYSTEMS		No. 1



ADVANTAGE FRANKE - High Grade Materials



TECTONITE®

Made in The Netherlands. Now available in India.

TECTONITE® is the latest innovation by Franke - made of TECTONITE®, which is a hi-tech, light but strong synthetic material that gives you amazing advantages:

- It is extreme temperature resistant (230-300 degrees)
- It is scratch resistant and has a super smooth and easy to clean texture
- It is shock proof and almost unbreakable
- It is resistant to chemicals used in the kitchen (vinegar, tomato sauce, etc.)
- It has a UV resistant coating (its colour will not change)
- It is a 100% recyclable material
- It is available in high tech colour: Carbon Black
- It has a five year warranty



Beautiful and Strong

A great looking and smooth surface, the TECTONITE® material prevents scuffing or scratching. It is also easy to clean and doesn't lose colour.



3rd Generation Coating

A new coating called PIMC (Power in Mold Coating) gives a protective layer providing strength to the material and protecting its colour.



Exclusive Texture

It is finished with an exclusive texture that coats the sink and repels water and dirt to keep the surface looking as good as new.



Austenitic stainless steels (SS 304-Austenitic grade)

All Franke Stainless steel sinks are manufactured using only SS 304 Austenitic grade. Austenitic stainless steel are chromium & nickel containing stainless steel with very low carbon content. Austenitic 304 stainless steels formed through the generous use of austenitizing elements such as nickel, manganese and nitrogen. Chromium content is range of 18% and nickel content in range of 8%. They are non-magnetic but can become slightly magnetic when cold worked. Cold working also enhances their strength. Austenitic stainless steel have mechanical properties over a wide range of temperatures. In addition, these steel are easy to clean, which enhances their use in applications in hygienic and sterile environments.



18/10: 18% Chromium and 10% Nickel

This material is used in Neptune, Logica, Armada, Lugano, Zeno



18/8: 18% Chromium and 8% Nickel

This Material is used in 610, 611, 620, 621, 651 and Adrian Series





Microdecor Finish

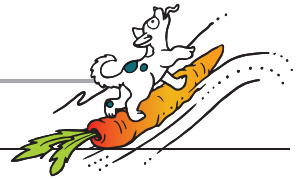
The distinctive pattern of Microdecor steel is so light as to be almost invisible, recalling the effect of aluminum and giving the steel a unique, inimitable appearance. Any scratches only damage the tiny convex areas of the surface, while the imperceptible concave zones prevent the formation of visible marks.



European Satin Finish

Franke uses a unique process of brush polishing on CNC controlled latest technology machine along with special "Franke" ATL-F22 paste that gives product surface a smooth European Satin finish with good aesthetic look. This makes it best suitable for all kitchen applications since it is prone to scratching during daily usages.

Warranty



25 Year Warranty

All Franke Stainless Steel Sinks are guaranteed for 25 Year against faulty workmanship and material.



5 Year Warranty

All Franke Color Sinks are guaranteed for 5 Year against faulty workmanship and material.

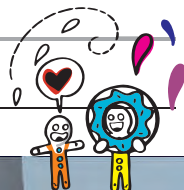


1 Year Warranty

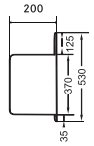
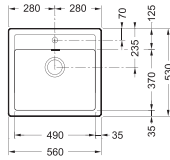
All Franke Taps, Bio Waste Disposer & Accessories are guaranteed for 1 Year against faulty workmanship and material.



TECTONITE®

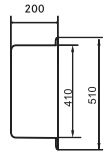
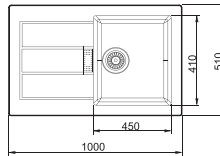


Tectonite 610



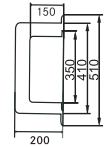
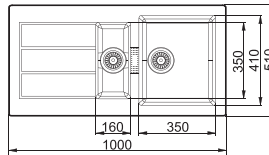
Fun	Dimensions (LxW) mm	Bowl Size (LxWxD) mm	MRP ₹
Carbon Black 114.0279.873	560x530	490x370x200	9,990/-

Tectonite 611



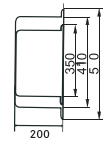
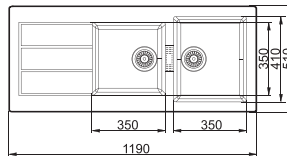
Fun	Dimensions (LxW) mm	Bowl Size (LxWxD) mm	MRP ₹
Carbon Black 114.0253.151	1000x510	450x410x200	16,400/-

Tectonite 651



Fun	Dimensions (LxW) mm	Bowl Size (LxWxD) mm	MRP ₹
Carbon Black 114.0253.160	1000x510	Big 350x410x200 & Small 160x350x150	18,400/-

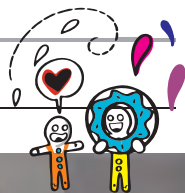
Tectonite 621



Fun	Dimensions (LxW) mm	Bowl Size (LxWxD) mm	MRP ₹
Carbon Black 114.0253.281	1190x510	350x410x200 & 350x350x200	21,800/-



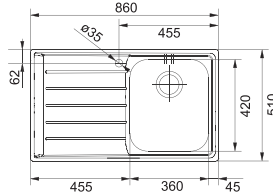
NEPTUNE - Microdecor Finish



NEPTUNE - Microdecor Finish

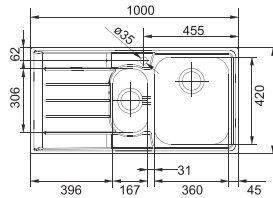


NET 611



Fun	Dimensions (LxW) mm	Bowl Size (LxWxD) mm	MRP ₹
RHD 101.0262.014	860x510	360x420x200	21,800/-
LHD 101.0262.013	860x510	360x420x200	21,800/-

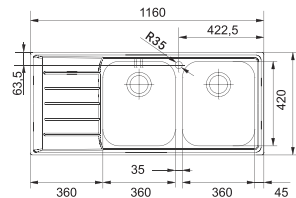
NET 651



Fun	Dimensions (LxW) mm	Bowl Size (LxWxD) mm	MRP ₹
RHD 101.0253.263	1000x510	Big 360x420x200	28,200/-
		Small 167x306x152	
LHD 101.0261.836	1000x510	Big 360x420x200	28,200/-
		Small 167x306x152	



NET 621



Fun	Dimensions (LxW) mm	Bowl Size (LxWxD) mm	MRP ₹
RHD 101.0253.262	1160x510	360x420x200	31,200/-
LHD 101.0261.835	1160x510	360x420x200	31,200/-

ADRIAN* - Microdecor/European Satin Finish

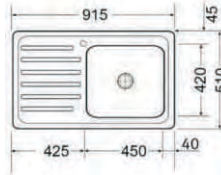


ADRIAN* - Microdecor/European Satin Finish

Make it Wonderful

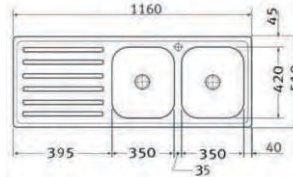


ADRIAN 611 Omni (Microdecor Finish)



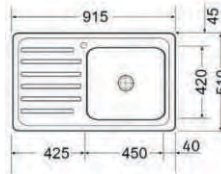
Fun	Dimensions (LxW) inch/mm	Bowl Size (LxWxD) inch/mm	MRP ₹
101.0250.149	36x20/915x510	18x17x8/450x420x200	12,290/-

ADRIAN 621 Trendy (Microdecor Finish)

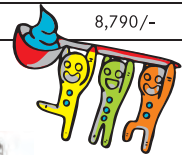


Fun	Dimensions (LxW) inch/mm	Bowl Size (LxWxD) inch/mm	MRP ₹
101.0250.781	46x20/1160x510	14x17x7/350x420x180	21,990/-

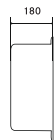
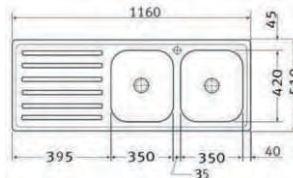
ADRIAN 611 Omni (European Satin Finish)



Fun	Dimensions (LxW) inch/mm	Bowl Size (LxWxD) inch/mm	MRP ₹
101.0258.689	36x20/915x510	18x17x8/450x420x200	8,790/-



ADRIAN 621 Trendy (European Satin Finish)



Fun	Dimensions (LxW) inch/mm	Bowl Size (LxWxD) inch/mm	MRP ₹
101.0258.710	46x20/1160x510	14x17x7/350x420x180	16,590/-

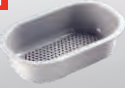
*Premium collection

ARMADA - European Satin Finish



Accessories

1



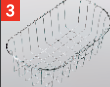
Colander

2



Wooden Cutting Board

3



Stainless Steel Basket

4



Stainless Steel Basket

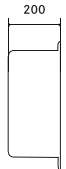
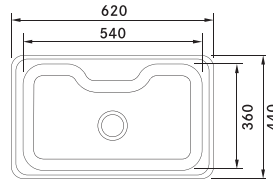
5



Wooden Cutting Board

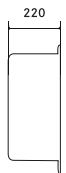
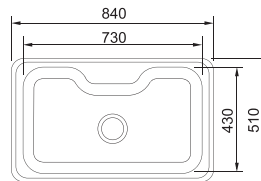


AAX 610-62 1 2 3



Fun	Dimensions (LxW) mm	Bowl Size (LxWxD) mm	MRP ₹
101.0253.217	620x440	540x360x200	17,650/-

AAX 610-85 4 5



Fun	Dimensions (LxW) mm	Bowl Size (LxWxD) mm	MRP ₹
101.0253.212	840x510	730x430x220	20,600/-

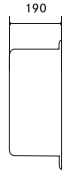
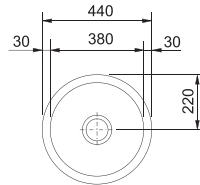
LUGANO - European Satin Finish

Make
it
Wonderful

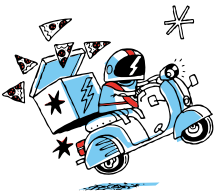
FRANKE



LUX 610



Fun	Diameter (Ø) mm	Bowl Size (Ø x depth) mm	MRP ₹
101.0253.181	440	380x190	7,500/-



I PLANER - Square Sink European Satin Finish

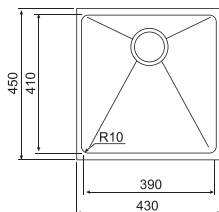


I PLANER - Square Sink European Satin Finish

Make
it
Wonderful

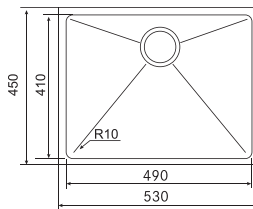
FRANKE

PIX-610-43

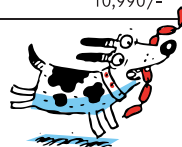


Fun	Dimensions (LxW) mm	Bowl Size (LxWxD) mm	MRP ₹
101.0365.678	420x450	380x410x200	8,990/-

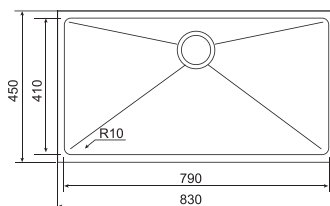
PIX-610-58



Fun	Dimensions (LxW) mm	Bowl Size (LxWxD) mm	MRP ₹
101.0342.610	580x450	540x410x200	10,990/-

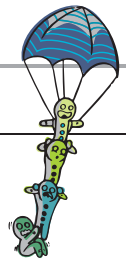


PIX-610-83

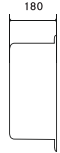
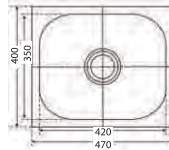


Fun	Dimensions (LxW) mm	Bowl Size (LxWxD) mm	MRP ₹
101.0369.275	820x450	780x410x200	11,990/-

610 SERIES*- European Satin Finish

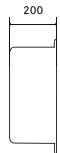
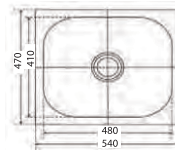


610 X Trendy (19 x 16)

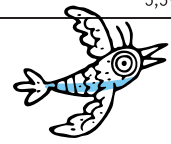


Fun	Dimensions (LxW) inch/mm	Bowl Size (LxWxD) inch/mm	MRP ₹
101.0152.868	19x16/470x400	14x17x7/420x350x180	4,690/-

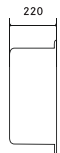
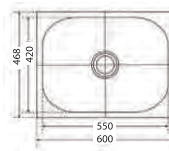
610 X Insti (21 x 18)



Fun	Dimensions (LxW) inch/mm	Bowl Size (LxWxD) inch/mm	MRP ₹
101.0153.081	21x18/540x470	19x16x8/480x410x200	5,590/-



610 X Grand (24 x 18)



Fun	Dimensions (LxW) inch/mm	Bowl Size (LxWxD) inch/mm	MRP ₹
101.0153.088	24x18/600x468	22x17x9/550x420x220	6,590/-

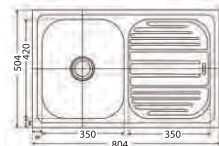
*Premium collection

611 SERIES* - European Satin Finish

Make
it
Wonderful

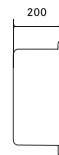
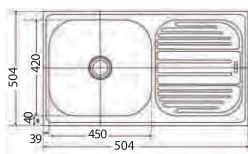
FRANKE

611 X Trendy (32 x 20)



Fun	Dimensions (LxW) inch/mm	Bowl Size (LxWxD) inch/mm	MRP ₹
101.0153.107	32x20/804x504	14x17x7/350x420x180	7,490/-

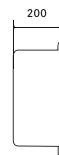
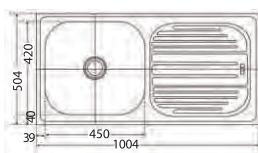
611 X Omni (36 x 20)



Fun	Dimensions (LxW) inch/mm	Bowl Size (LxWxD) inch/mm	MRP ₹
101.0153.112	36x20/904x504	18x17x8/450x420x200	8,090/-



611 X Omni (40 x 20)



Fun	Dimensions (LxW) inch/mm	Bowl Size (LxWxD) inch/mm	MRP ₹
101.0153.116	40x20/1004x504	18x17x8/450x420x200	8,890/-

*Premium collection

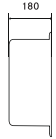
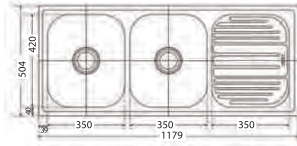


621 SERIES* - European Satin Finish

Make it Wonderful

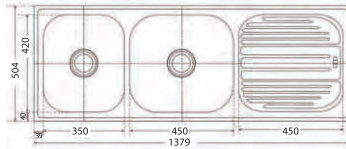


621 X Trendy (47 x 20)



Fun	Dimensions (LxW) inch/mm	Bowl Size (LxWxD) inch/mm	MRP ₹
101.0153.143	47x20/1179x504	14x17x7/350x420x180	15,090/-

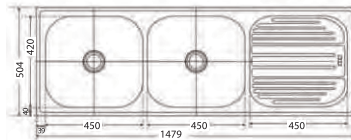
621 CX Omni (55 x 20)



Fun	Dimensions (LxW) inch/mm	Bowl Size (LxWxD) inch/mm	MRP ₹
101.0153.145	55x20/1379x504	Big 18x17x8/450x420x200 Small 14x17x7/350x420x180	16,490/-



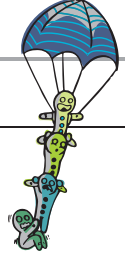
621 X Omni (59 x 20)



Fun	Dimensions (LxW) inch/mm	Bowl Size (LxWxD) inch/mm	MRP ₹
101.0153.151	59x20/1479x504	18x17x8/450x420x200	18,890/-

*Premium collection

KITCHEN FAUCETS



Body Material

Bronze (59% - 63%), low lead content (0.8 % - 1.6 %) low residue <1.5%) – gravity casting or low pressure casting.

Most products in the market are sand cased with lots of pinholes and uneven body thickness.

Electroplating

The thickness of the nickel plating is more than international and European standards and more corrosion resistant than others.

Surface chrome plating thickness for Nickel and Chrome

Frankle	Nickel > 7.5u	Chrome > 0.25 u
International Standard	Nickel > 5 u	Chrome > 0.1u
EN 817 / EN 200		



Cartridge: German Ceramic Cartridge and Longer Life

Flexible hose: Spanish S/S 304 flexible hose, pressure resistant and corrosion resistant

Aerator: Using top grade Aerator, integrating water saving and water flow

Fasteners: All using Stainless Steel

RMD 891

LLD 821

M 507-C8



Fun	MRP ₹
115.0154.681	8,150/-

Fun	MRP ₹
115.0154.680	4,350/-

Fun	MRP ₹
115.0083.496	6,900/-

▷ PULL OUT TAP

KITCHEN FAUCETS

Make
it
Wonderful

FRANKE

CT 101S



Fun	MRP ₹
115.0254.611	18,990/-
▷ PULL OUT SS TAP	



CT 103SE



Fun	MRP ₹
115.0254.614	12,990/-
▷ SS TAP	

CT 133S



Fun	MRP ₹
115.0172.515	14,990/-
▷ PULL OUT SS TAP	



RT 505



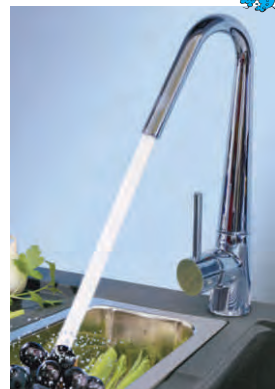
Fun	MRP ₹
115.0079.067	6,850/-

CT 903C



Fun	MRP ₹
115.0176.532	9,990/-

CT 501C



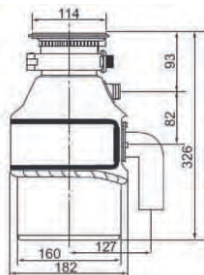
Fun	MRP ₹
115.0255.560	7,890/-

BIO WASTE DISPOSER



Bio Waste Disposer 0.75 HP

A high output power Bio Waste Disposer with 0.75 HP motor. The lower speed but high output power delivers an ideal combination crunch with low noise. Crunch and Dispose the following down the drain, for an easily-maintained and hygienic kitchen: fruit, vegetable peels, rice, soft chicken bones and egg shells.



Model	FUN	MRP ₹
Bio Waste Disposer	134.0041.549	16,200/-

Features

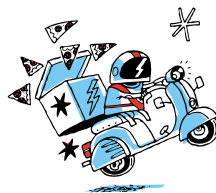
- Fast grinding technology
- Corrosion proof stainless steel
- Manual reset for overload protection
- Handy wall stitch operation
- Easy and convenient installation
- Under cutter disk

Materials

- Sink flange: Stainless steel
- Hopper: Glass filled nylon
- Swivel impeller: Stainless steel
- Turntable: Stainless steel

Specification

- Motor speed: 1450 rpm
- Horsepower: 0.75 HP
- Rating power: 560W, 220V-250V/50-60Hz
- Motor type: AC induction
- Type of feed: Continuous
- Sound Shell: Yes
- Overload protection: Manual reset
- Container: 1200 ml
- Diameter of standard sink hole: 90 mm
- Individual shipping weight: 6.3 kg



ACCESSORIES

PLUMBING KIT SINGLE BOWL - 611



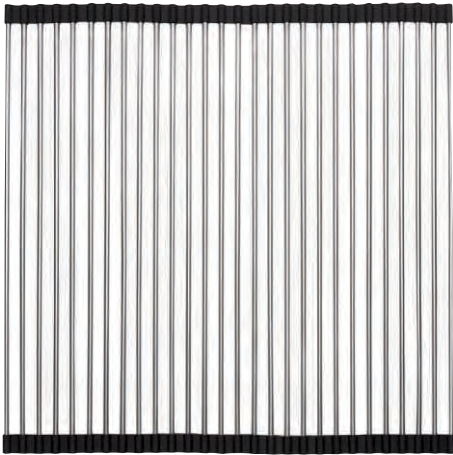
Fun	MRP ₹
112.0156.034	990/-

PLUMBING KIT DOUBLE BOWL - 621

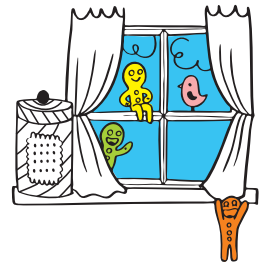


Fun	MRP ₹
112.0156.044	1,360/-

ROLLER MAT



Size	Fun	MRP ₹
366 x 438 mm	112.0058.824	3,000/-
400 x 400 mm	112.0050.988	3,500/-



*Features and specifications as shown may not be part of standard accessories and are subject to change without prior notice. All Dimensions are approximate.



FRANKE FABER CUSTOMER CARE



1800 209 3484

All India Toll Free Helpline No.



Regd. Office:

FRANKE FABER INDIA PVT. LTD.

Gat No.: 1086/1/2, Nagar Road,
Sanaswadi, Tal Shirur, Pune - 412208,
Maharashtra, India.

E-mail: ks-appliances.in@franke.com

website: www.franke.com

CIN-U99999PN1997PLC107240

Follow us on:  /frankeindia

Manufacturing Plant:

FRANKE FABER INDIA PVT. LTD.

Plot No. L-7, MIDC, Waluj Industrial
Area, Aurangabad-431136,
Maharashtra, India.

E-mail: ks-appliances.in@franke.com

website: www.franke.com

CIN-U99999PN1997PLC107240

Follow us on:  /frankeindia



AUTHORISED DEALER

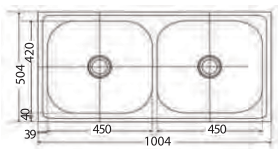


FRANKE

620/651 SERIES* - European Satin Finish

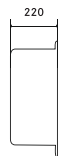
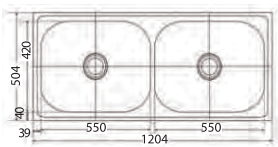


620 X Omni (40 x 20)



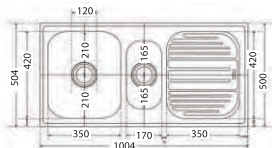
Fun	Dimensions (LxW) inch/mm	Bowl Size (LxWxD) inch/mm	MRP ₹
101.0153.137	40x20/1004x504	18x17x8/450x420x200	15,590/-

620 X Grand (48 x 20)



Fun	Dimensions (LxW) inch/mm	Bowl Size (LxWxD) inch/mm	MRP ₹
101.0153.141	48x20/1204x504	22x17x9/550x420x220	18,390/-

651 X Trendy (40 x 20)



Fun	Dimensions (LxW) inch/mm	Bowl Size (LxWxD) inch/mm	MRP ₹
101.0153.153	40x20/1004x504	Big 14x17x7/350x420x180	13,990/-
		Small 07x13x5/175x330x130	

*Premium collection

